

Driving Innovation, Technology and Re-industrialisation in Hong Kong, China

Ms. Belinda Wong
Assistant Director-
General of Trade
and Industry
(Industries Support)

The Government
of the Hong Kong
Special
Administrative
Region





What we have done



✓ **November 2015: Establishment of Innovation and Technology Bureau (ITB)**

- **Fostering diversification of economic development**
- **Raising competitiveness**
- **Improving quality of life in our city**



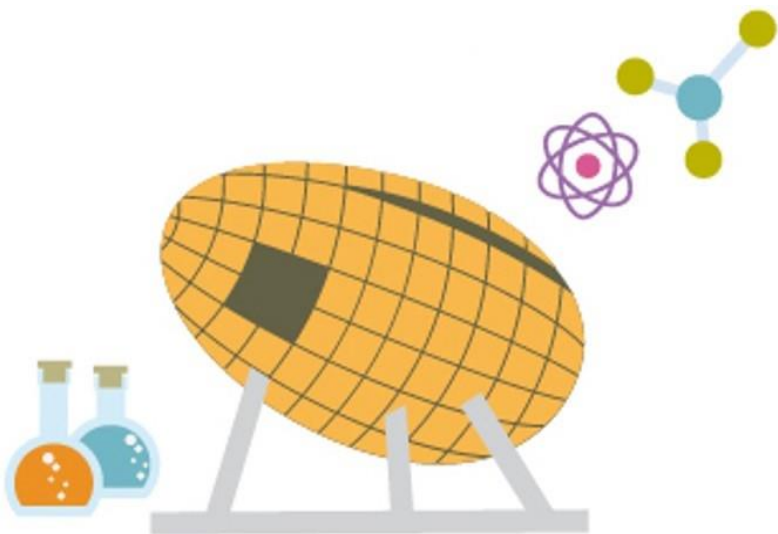


Continue to build strength as I&T Hub

After 2 years of establishing ITB...

Committee on Innovation, Technology and Re-industrialisation

- Chaired by Financial Secretary to coordinate efforts through a higher-level and inter-bureau approach



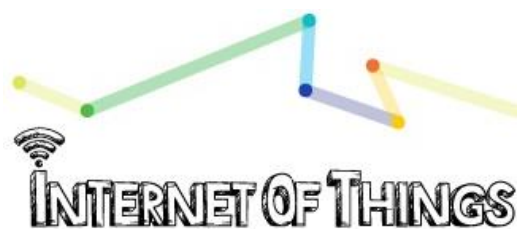
MIT Hong Kong
Innovation Node



“Re-industrialisaion” in Hong Kong



- ✓ Apply I&T to manufacturing for developing high-end manufacturing industries
- ✓ Carry out high value-added production processes in Hong Kong





Hong Kong-Shenzhen Innovation and Technology Park

- 87 hectares, 4 times the area of HK Science Park
- Home to technology companies, R&D enterprises and higher-education institutions from Hong Kong, the Mainland China and around the world

**COMING
SOON!**





Supplying more space and facilities

- New site for development of industrial estates (“IEs”)
- More efficient use of current IEs



Science Park Expansion
Groundbreaking ceremony

*Increase floor
area by 20% to
400 000 sq. m*

To build 2 specialised multi-story
industrial complex:
“Data Technology Hub” &
“Advanced Manufacturing Centre”
for I&T and high value-added production sectors



Moving towards “Industry 4.0” (4th industrial revolution)

Development of a new business model – integration of products and services in a customer-driven supply chain takes precedent over products



HKPC®





Driving quality R&D capabilities

Hong Kong Applied Science and Technology Research Institute Company Limited

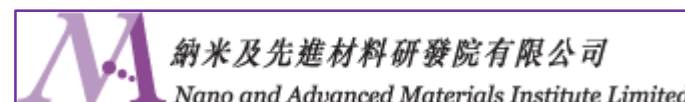
- Intelligent manufacturing as a strategic R&D focus

The Centre for Logistics and Supply Chain Management Enabling Technologies

- Develop new IoT and robotic technologies (smart IoT warehouse management system and Automated Guided Vehicles)

Nano and Advanced Materials Institute

- Develop platform technologies (nanofibers and ant-bacterial materials)





Financial assistance for I&T Development

Innovation and Technology Fund

Finance applied R&D projects contributing to I&T upgrading in manufacturing and service industries and promotion of innovation

Innovation and Technology Support Programme

University-Industry Collaboration Programme

Enterprise Support Scheme

Patent Application Grant

Prime objectives:

- Encourage more R&D
- Promote “re-industrialization”



Other support schemes for SMEs

Assist enterprises, particularly SMEs, in areas such as:

- Obtaining finance
- Expanding export markets
- Enhancing overall competitiveness
- Developing brand, upgrading and expanding businesses



Thank you

